



# Asure ID

Card Personalization Software





# Asure ID Card Personalization Software

Advanced tools in an intuitive package

## **SIMPLIFIED YET ROBUST CARD PERSONALIZATION**

Asure ID transforms the ID card personalization experience — combining an intuitive feel with powerful performance. Its user-friendly interface and streamlined workflows make it easier than ever to design ID card templates and manage data entry. But beneath its approachable design lies a robust set of tools built to handle even the most advanced ID card applications. Whether you're just getting started or you're an experienced professional, Asure ID empowers you to create secure credentials and ID cards with unmatched ease and efficiency.

## **PRODUCTIVITY REDEFINED**

The Asure ID interface delivers a significant boost in speed and efficiency for both card design and data entry. Everything you need to create and personalize ID cards is right at your fingertips, with streamlined workflows that simplify routine tasks and save valuable time. Whether you're capturing, uploading or enhancing a photo, voiding a card or adjusting the print counter, it's all just a few clicks away.

## **EFFORTLESS, EVERYDAY USE**

Card data fields can be filled automatically from the built-in Microsoft® Access® database or pulled from external sources like HR, security or ERP systems — ensuring seamless integration with your existing infrastructure.

A familiar Microsoft ribbon-style toolbar keeps frequently used features easily accessible, while tabbed navigation allows users to multitask with ease — switching effortlessly between design and data entry views. To further reduce on-screen clutter, pop-out control palettes keep color and attribute options hidden until needed, creating a cleaner and more focused workspace.

Asure ID isn't just software. It's a smarter, faster way to get the job done.

## DATABASES DEMYSTIFIED

For many users, Asure ID's built-in Microsoft Access database provides everything needed to store card templates and cardholder data — enabling users to quickly and easily print ID cards.

With more sophisticated versions of Asure ID, users can leverage the import/export wizard to import record data from Microsoft Excel® or employ the software's Live Link feature to pull data directly from external databases such as HR, security or ERP systems. Depending on the Asure ID edition selected, database connectivity and networking for enterprise-class card issuance is expanded with support for ODBC import, Oracle®, MySQL®, LDAP and Microsoft SQL Server®.

Live Link also allows administrators to link photos from local folders and apply intuitive file-naming conventions — adding flexibility and ease to the card personalization process.

Setting up real-time data connections is simple with the Live Link Wizard, which guides you through the process in just a few clicks. At print time, Live Link automatically retrieves and populates external data fields, ensuring your cards are accurate and up to date.

## FIND WHAT YOU NEED – FAST

When time is critical, Asure ID's Quick Filter delivers instant, wildcard-based searching across any field in the active database. Administrators can configure it to appear automatically upon log-in, streamlining the data entry process for operators.

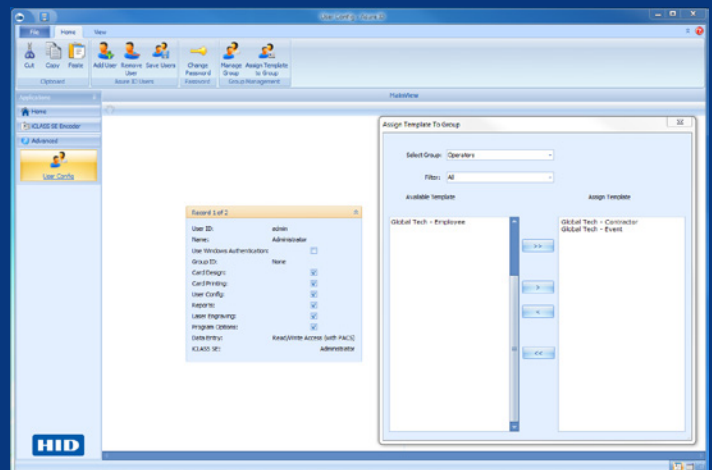
For even broader access, the Global Find feature expands search capabilities across all databases and templates managed within Asure ID — making it an essential tool for enterprise-level operations and card service bureaus.

## CUSTOMIZED REPORTING SECURELY DELIVERED

In addition to a range of ready-to-use reports, Asure ID Express, Enterprise and Exchange editions make it easy to filter, sort and group data for customized reporting. Creating and saving personalized reports is straightforward, and configurable reporting privileges — along with application-wide password protection — help safeguard your ID data.

## Configurable Privileges for Increased Security

Asure ID's advanced user configuration module limits or grants access to specified Asure ID modules and templates for increased security.



# Fast, Intuitive and Efficient

## STREAMLINED DATA ENTRY

Along with its simplified card design and seamless database integration, Asure ID delivers a fast and efficient solution for enrolling large volumes of cardholder records. It offers multiple standard viewing options — including table, carousel and single-record views — to simplify record creation. The customizable data entry center also allows you to define the order and method of data input, significantly boosting the speed and efficiency of the enrollment process.

## TAKING THE COMPLEXITY OUT OF DATA EDITING AND MANAGEMENT

Asure ID's DataView feature makes it easy to manage large databases by allowing users to edit and maintain data separately from the card design. This flexibility enables you to assign and switch between different card designs on a per-record basis, streamlining the overall data management process.

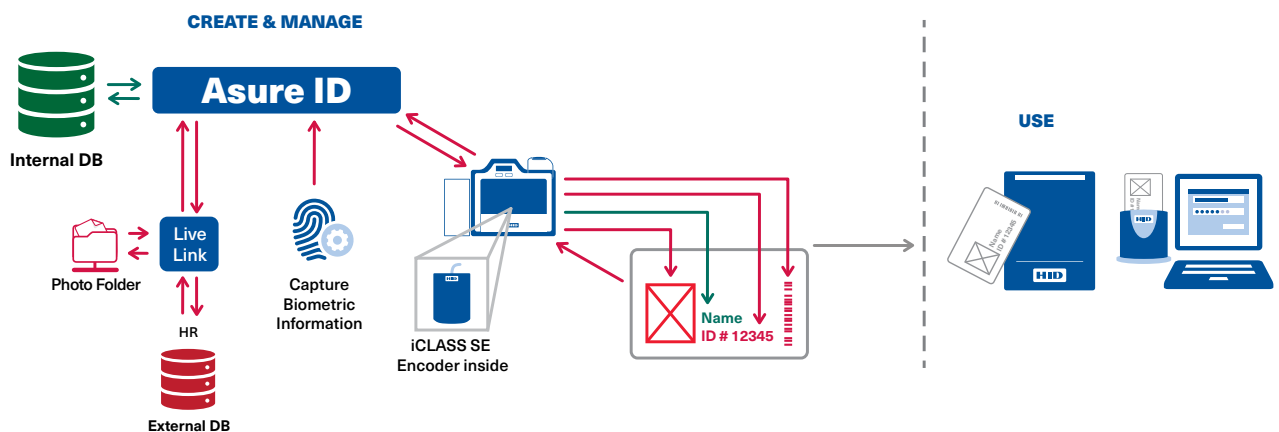
## SIMPLIFYING EVERYDAY TASKS

Asure ID is designed to streamline daily operations by offering a range of user-friendly features — including card voiding, print counters, reporting tools, printer-to-template association, automatic loading of the last used template at startup, custom color saving and more.

## INLINE SMART CARD PERSONALIZATION

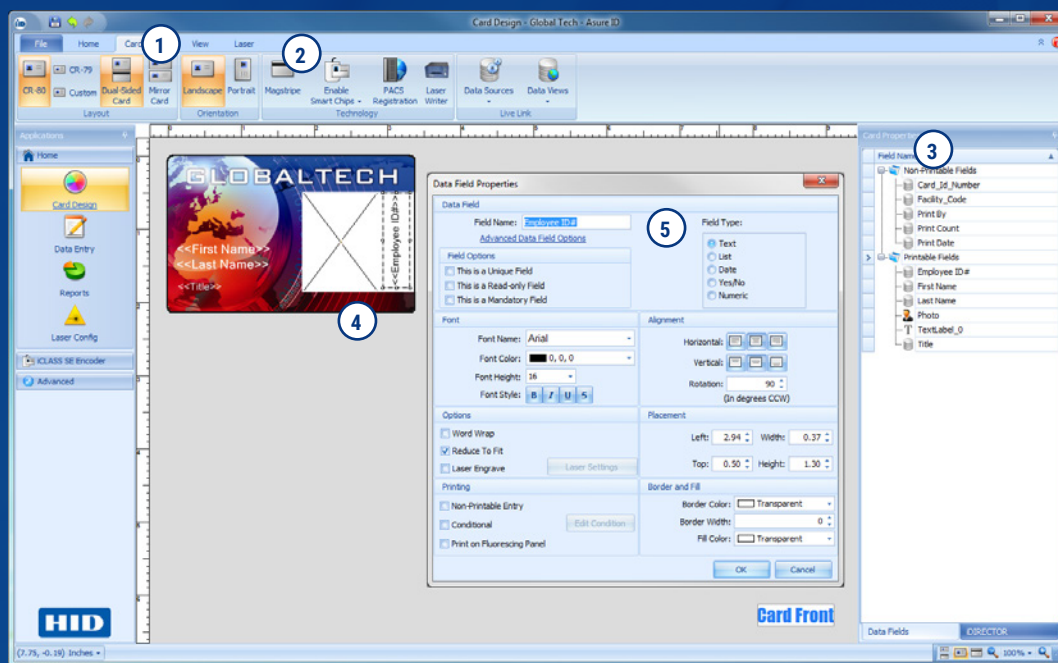
Engineered for advanced secure credential applications, Asure ID Exchange's iDIRECTOR encoding module enhances the development and deployment of smart cards. iDIRECTOR efficiently manages card memory, supports the loading of multiple smart card applications and enables graphical personalization of smart cards — such as iCLASS SE or iCLASS Seos — all within a single, integrated workflow.

Whether you're merging cardholder data from multiple sources using Live Link's real-time data exchange for cashless vending or registering card details into a physical access control system for secure door entry, Asure ID ensures seamless integration and functionality.



# Card Personalization Made Easy

Whether your ID card printing needs are simple or complex, HID's Asure ID card personalization software provides everything you need to design and populate a card. Its intuitive interface allows users to glide from data entry and card design to printing and reporting with ease.



- 1 Tabbed navigation** — Keeps key functions like card design and data entry organized and easily accessible through always-visible clickable tabs
- 2 Intuitive tool ribbons** — Groups frequently used elements — such as data fields, barcodes and photos — into logical, easy-to-reach sections
- 3 Pop-out control palettes** — Streamlines the workspace by keeping template attributes hidden until needed, reducing clutter and improving focus
- 4 True-to-output preview** — Enables users to see exactly how your ID card will print with real-time rendering of layout, images and data fields
- 5 Consistent properties dialog boxes** — Allows users to easily configure object attributes like color, size and position through simple, dismissible floating windows

# Flexible ID Software for Every Level of Credentialing

Asure ID is available in four editions, each offering progressively advanced features to meet a wide range of credentialing needs. Whether you're creating basic photo IDs or issuing complex, secure smart card credentials, there's an Asure ID edition designed to fit your requirements.



## **ASURE ID SOLO: SIMPLE, POWERFUL, ENTRY-LEVEL ID CARD SOFTWARE**

Asure ID Solo is an ideal solution for organizations just getting started with ID card personalization. Designed for ease of use and quick learning, it offers a range of helpful features to streamline the creation and management of basic photo IDs. Card data can be easily sourced from the built-in Microsoft Access database, and its intuitive user interface allows you to design professional, full-color IDs in just minutes.



## **ASURE ID EXPRESS: ENHANCED FEATURES FOR SMARTER ID MANAGEMENT**

Asure ID Express builds on the capabilities of Asure ID Solo with advanced features like compound data fields, batch printing, and customizable design and print rules. It offers seamless integration with external Microsoft Access databases or allows you to import records from Microsoft Excel using the built-in wizard. To help strengthen credential security, the software also supports role-based log-in permissions, enabling controlled access to specific modules within the application.



## **ASURE ID ENTERPRISE: SCALABLE ID SOFTWARE FOR ENTERPRISE-LEVEL CREDENTIALING**

Asure ID Enterprise is designed for large-scale, networked environments, offering advanced database connectivity and support for enterprise-class card issuance. It integrates seamlessly with Microsoft Access and SQL databases and supports ODBC data import. The Enterprise edition can access and manage multiple tables within a single database, providing greater flexibility for complex data structures.



## **ASURE ID EXCHANGE: ULTIMATE CONTROL FOR SECURE CREDENTIALING**

Asure ID Exchange is built for high-security credentialing, offering support for Oracle, MySQL, LDAP and Microsoft Active Directory databases. It handles multiple tables across multiple databases and includes the powerful iDIRECTOR module for advanced smart card management. With support for the iCLASS SE open encoder platform, it delivers end-to-end control of PACS credentials — allowing on-site issuance, encoding and management using FARGO printers with embedded encoders. It supports a wide range of card technologies, including iCLASS Seos, iCLASS SE, HID PROX and more.



## ASURE ID MEETS THE CARD APPLICATION NEEDS OF:

- Large Corporations
- National ID Programs
- Government/ Military
- State & Local Government
- Healthcare
- Education
- Small/Medium Businesses

## PART OF A COMPLETE SOLUTION

Asure ID is a key component of a fully integrated HID ecosystem for secure ID issuance, management and authentication. Partner with your HID dealer to create a customized solution using trusted HID technologies, including:

- FARGO ID card printers/ encoders
- Cards, ribbons, films and overlaminates
- HID contact and contactless card readers

	SOLO	EXPRESS	ENTERPRISE	EXCHANGE
<b>GENERAL</b>				
<b>Operating System Support: Windows® 10/11</b>	■	■	■	■
<b>Language support: English, French, German, Spanish, Russian, Portuguese (Brazil), Italian, Japanese, Korean, Simplified Chinese, Thai, Indonesian, Arabic, Turkish, &amp; Czech</b>	■	■	■	■
<b>Microsoft® Access® (2000, 2002, &amp; 2003)</b>	Native	Native / Live Link	Native / Live Link	Native / Live Link
<b>Password Log-on with Definable User Privileges and Card Template Access</b>		■	■	■
<b>Microsoft® SQL Server® (2000, 2005, 2008, 2012, 2014, 2016, 2017, 2019 &amp; 2022)</b>			Native / Live Link	Native / Live Link
<b>Networkable<sup>4</sup></b>			■	■
<b>MySQL® (Version 5)</b>				Live Link
<b>Oracle® (9i, 11g &amp; 21c)</b>				Native / Live Link
<b>Microsoft Active Directory/LDAP</b>				(Read-Only)
<b>CARD DESIGN</b>				
<b>Dual-sided Template Designs</b>	■	■	■	■
<b>Add Text Field (Variable &amp; Static)</b>	■	■	■	■
<b>Add Photo Fields</b>	■	■	■	■
<b>Import Images (e.g., Logos &amp; Graphics)</b>	■	■	■	■
<b>Add a Linear Barcode</b>	■	■	■	■
<b>Add Magnetic Stripe</b>	■	■	■	■
<b>Fluorescing Panel (F-Panel) Support</b>	■	■	■	■
<b>Various Card Sizes</b>	CR-80 Only	■	■	■
<b>Add Data Fields</b>	8	Unlimited	Unlimited	Unlimited
<b>Add Compound Data Field</b>		■	■	■
<b>Add Signatures</b>		■	■	■
<b>Add 2D Barcodes (PDF417, QR Code, &amp; Datastripe)</b>		■	■	■
<b>Set Conditional Design and Print Rules</b>		■	■	■
<b>Smart Card Encoding and Management (iDIRECTOR®)<sup>1</sup></b>				■
<b>Program Access Control Credentials (i.e. iCLASS SE® Encoder Support)</b>				■ <sup>5</sup>
<b>DATA ENTRY</b>				
<b>Integrated Photo Capture with Auto-Enhance (TWAIN, DirectShow® &amp; WIA)</b>	■	■	■	■
<b>Save and Search Records</b>	200	■ <sup>2</sup>	Unlimited	Unlimited
<b>Save Photos to Folder</b>	■	Custom Naming Option	Custom Naming Option	Custom Naming Option
<b>Global Find</b>		■	■	■
<b>Integrated Signature Capture</b>		■	■	■
<b>Batch and Sheet Printing</b>		■	■	■
<b>Reports (Standard &amp; Custom)</b>		■	■	■
<b>Export Reports</b>		■	■	■
<b>Microsoft Excel and Text File Import/Export</b>		■	■	■
<b>ODBC Import/Export</b>		Import	■	■
<b>Live Link (Real-time Data Exchange)<sup>3</sup></b>		Single DB/Single Table	Single DB/Multi-Table	Multi-DB/ Multi-Table
<b>Database View Connectivity</b>			■	■
<b>ASURE ID PROTECT PLANS</b>				
<b>Free Updates<sup>6</sup></b>	■	■	■	■
<b>Annual/Multi-Year Support Packages</b>	Optional	Optional	Optional	Optional

<sup>1</sup> Manage and control card access formats, smart cards and card applications. <sup>2</sup> Storage limitations based on Microsoft Access. <sup>3</sup> Bi-directional data exchange with third-party databases and applications. <sup>4</sup> Asure ID site licenses enable sharing of networked database information on multiple workstations. <sup>5</sup> iCLASS® Standard/SE/SR/Seos, MIFARE DESFire® EV1, HID Prox. <sup>6</sup> Free updates do not apply to major product releases.



hidglobal.com

North America: +1 512 776 9000

Toll Free: 1 800 237 7769

Europe, Middle East, Africa: +353 91 506 900

Asia Pacific: +852 3160 9800

Latin America: impresorasHIDFargo@hidglobal.com

**For more global phone numbers click here**

© 2025 HID Global Corporation/ASSA ABLOY AB.  
All rights reserved.

2025-10-03-si-asureid-card-software-br-en

Part of ASSA ABLOY